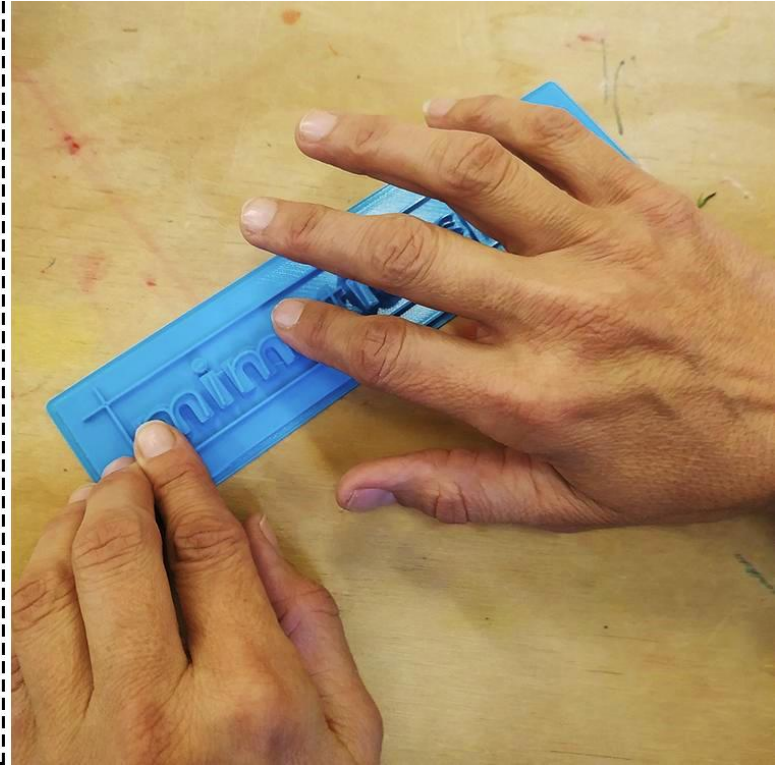


miméticaslab





miméticaslab

- WORK GROUP
- PARTICIPATORY ACCESIBILITY
- VISUAL IMPAIRMENT
- TACTILE REPRODUCTIONS OF WORKS OF ART
- NON-PROFIT ORGANIZATION
- OPEN SOURCE PROJECTS

HOW DO WE CREATE A TACTILE MODEL

1. OBTAINING THE 3D DIGITAL FILE OF THE ARTWORK
1. PROCESSING THE FILE
2. PRINTING
3. VALIDATING



**STEP 1: OBTAINING THE 3D
DIGITAL FILE OF THE ARTWORK**



Search for an object

scan the world

Scan the World is an ambitious community-built initiative whose mission is to share 3D printable sculpture and cultural artefacts using democratized 3D scanning technologies, producing an extensive ecosystem of free to download digital cultural heritage. In making culture accessible, communities are encouraged to share their scan stories, and creations with the goal to bring tangible heritage to the masses. Share your stories with us at [stw@myminifactory.com!](mailto:stw@myminifactory.com)

stw

- About
- Upload a scan
- How to scan
- Community
- Museums

- 📍 Scan the World India
- 📍 Scan the World China

Subscribe to our Newsletter
 Email Address

recent | **popular** | random

search the collection...
 search by artist...
 search by place...



MyMiniFactory

Search for an object

MiniWorld 3D

Username: MiniWorld

3D Printing since: March 2014

We are 30+ designers of detailed 3D models of landmarks & famous buildings of the world explicitly for 3D printing from scratch. Guaranteed printability.

Founder Dany Sánchez is an award-winning Mexican Industrial Designer and certified SolidWorks Professional.

Software Skills

1,691,363 Views | 29,468 Likes | Unfollow | Private Message | Website

f t d in





The British Museum PRO London, UK

A museum of the world, for the world.

FOLLOWING CONTACT 17.3k Followers 75 Followings



SUMMARY 265 MODELS COLLECTIONS 175 LIKES

POPULAR 3D MODELS


View all (265)



Granite head of ... 154.1k views 57 likes 821 triangles



Hoa Hakananai'a 49.3k views 22 likes 460 triangles



The Rosetta Stone 236.1k views 15 likes 398 triangles



Stone figure of Xiu... 22.5k views 17 likes 353 triangles



Horus (Falcon) 24.9k views 17 likes 342 triangles



Seated statue of A... 30.5k views 10 likes 272 triangles





ABOUT

The British Museum was founded in 1753, the first national public museum in the world. From the beginning it granted free admission to all 'studious and curious persons'.

CATEGORY

Organization / Museum

WEBSITE

<http://britishmuseum.org/>

MEMBER SINCE

October 8th 2014

STATS

- 1.4M views
- 12.2k likes
- 172.7M triangles
- 87.7M vertices

SKILLS

- Blender
- GIMP
- Photogrammetry
- Photoshop



STEP 2: PROCESSING THE FILE

PrusaSlicer-2.2.0 basado en Slic3r

Archivo Editar Ventana Ver Configuración Ayuda

Plataforma Configuración de impresión Configuración del filamento Configuración de la Impresora

Sencillo Avanzado Experto

Configuración de impresión: 0.15mm QUALITY (modificado)

Filamento: Prusament PLA

Impresora: Original Prusa MINI & MINI+

Soportes: En todos los sitios

Relleno: 15% Balsa:

Nombre	Edición
Nefertiti_figura.stl	

Manipulación de objetos

Coordenadas mundiales: X Y Z

Posición: 98.07 82.15 65 mm

Girar: 0 0 0 °

Factores de escala: 100 100 100 %

Tamaño: 63.12 95.88 130 mm

Laminar ahora

Cargado

PrusaSlicer-2.2.0 basado en Slic3r

Archivo Editar Ventana Ver Configuración Ayuda

Plataforma Configuración de impresión Configuración del filamento Configuración de la Impresora

Sencillo Avanzado Experto

Configuración de impresión: 0.15mm QUALITY (modificado)

Filamento: Prusament PLA

Impresora: Original Prusa MINI & MINI+

Soportes: En todos los sitios

Relleno: 15% Balsa:

129.95 (1207)

0.20 (1)

Recorrido

Nombre	Edición
bust-of-nefertiti_cum-berlin-1.stl	

Manipulación de objetos

Coordenadas mundiales: X Y Z

Posición: 90 90 65 mm

Girar: 0 0 0 °

Factores de escala: 100 100 100 %

Tamaño: 63.12 95.88 130 mm

Información del laminado

Filamento usado (m): 24.27

Filamento usado (mm³): 58386.76

Filamento usado (g): 72.40

Coste: 1.81

Tiempo estimado de impresión: 7h 56m

-- modo normal

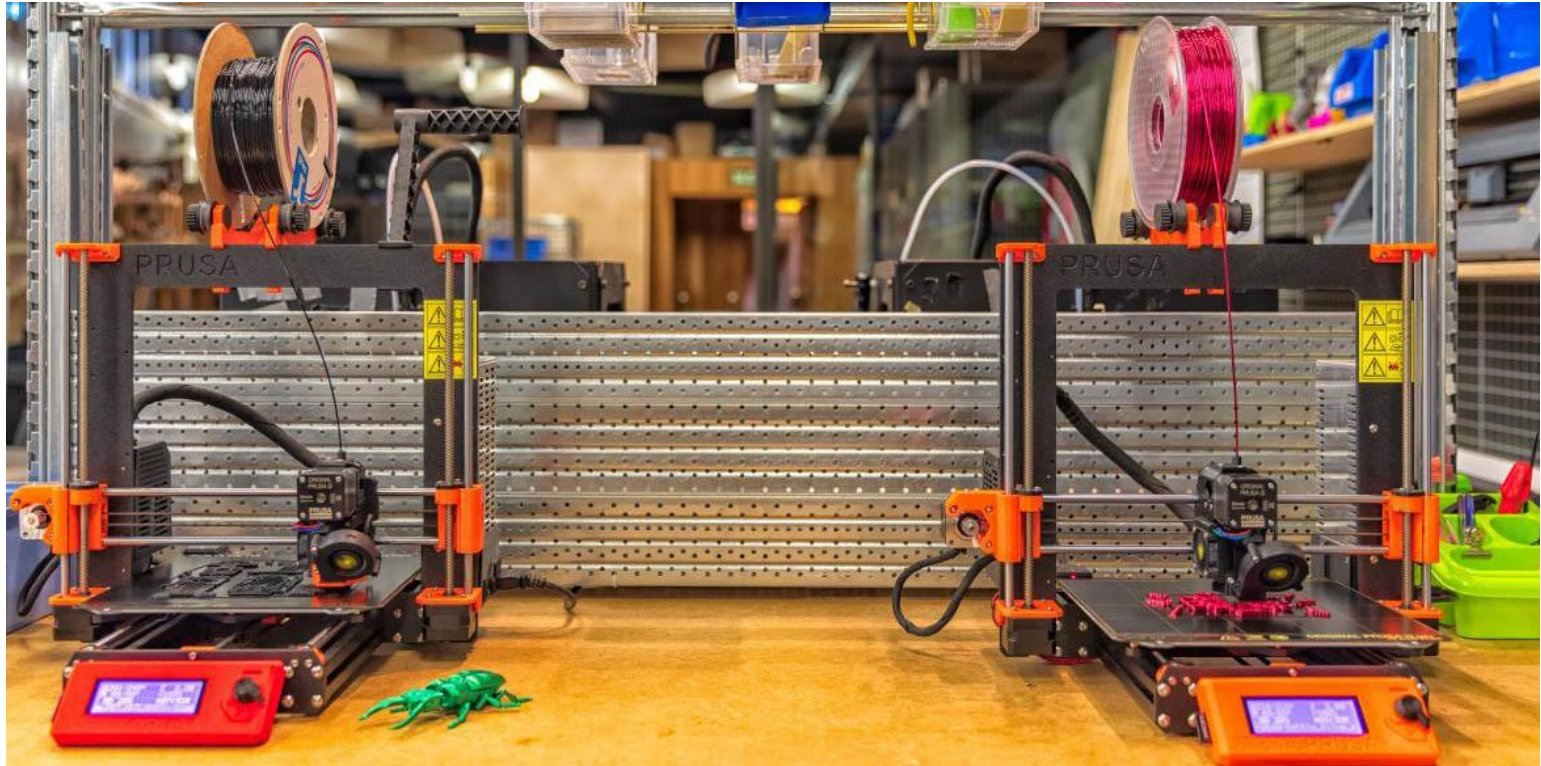
Exportar código G

Vista Tipo de función Mostrar Tipos de funciones

Laminado terminado...



STEP 3: PRINTING



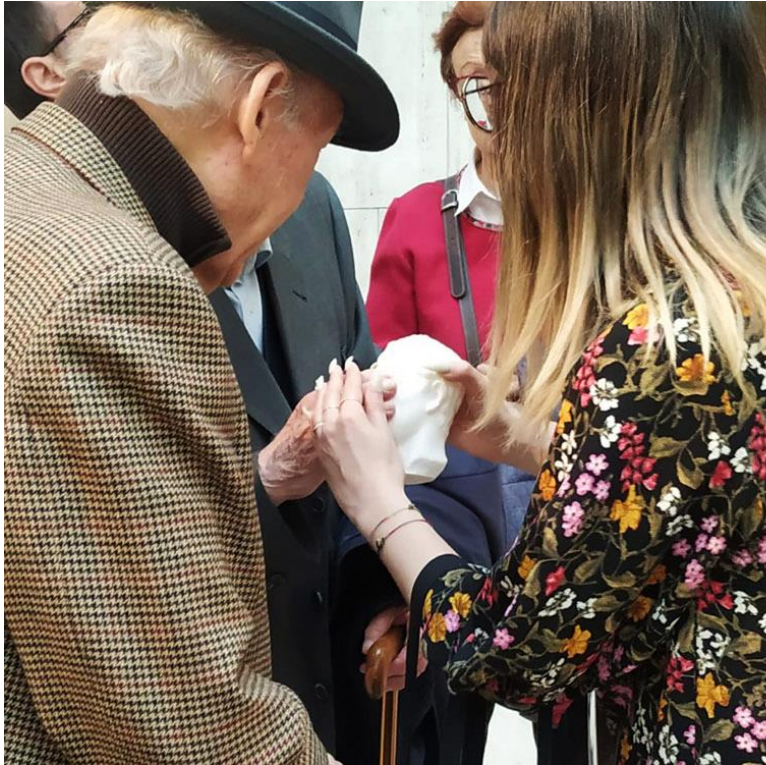


STEP 4: EVALUATING



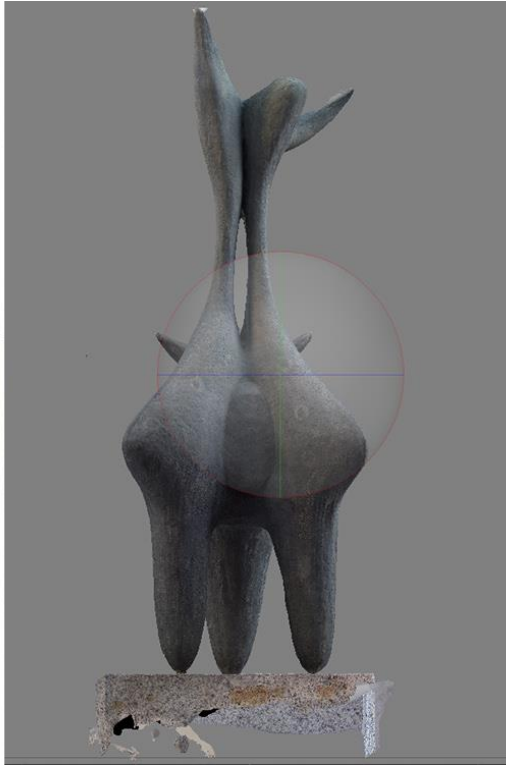
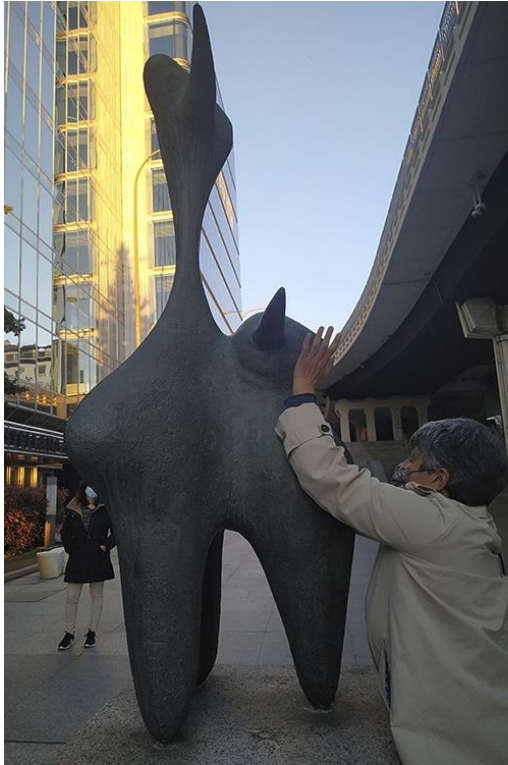






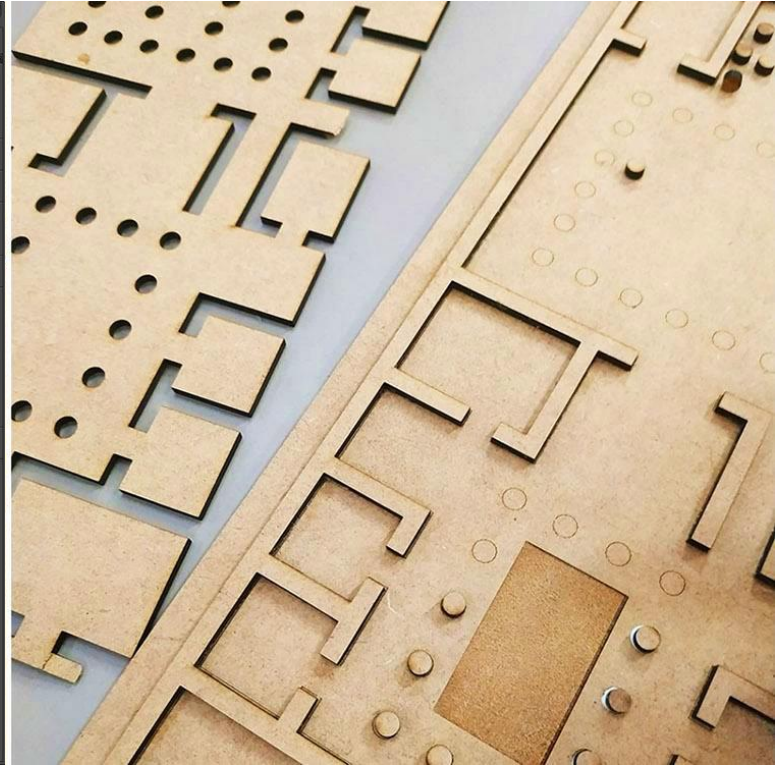
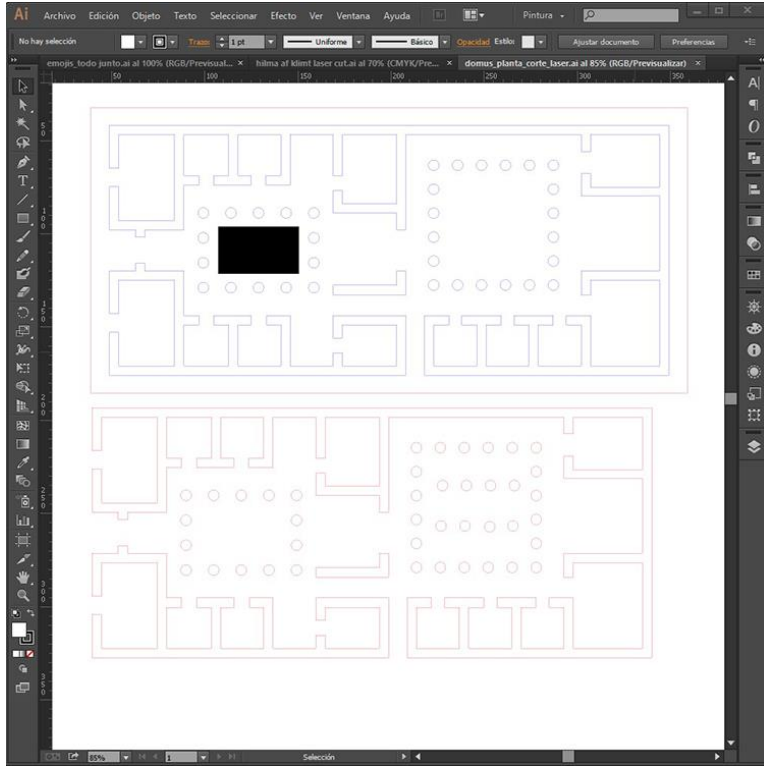
WHAT IF THE FILE IS NOT AVAILAIBLE ONLINE?

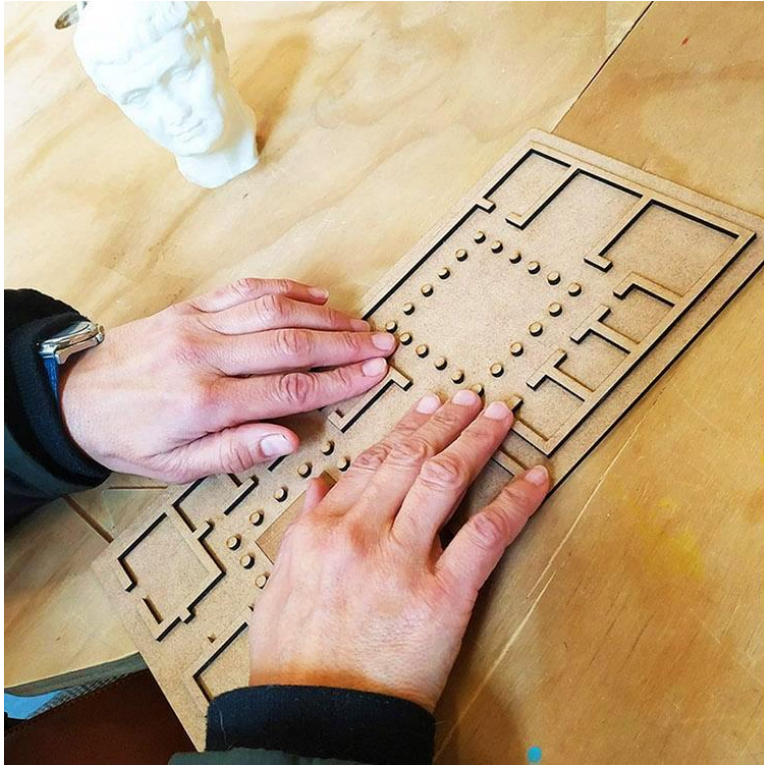
1. SCAN THE ORIGINAL ARTWORK → **FOTOGRAMMETRY**
2. CREATE THE MODEL → **3D MODELLING SOFTWARE**





OUR OWN DESIGNS





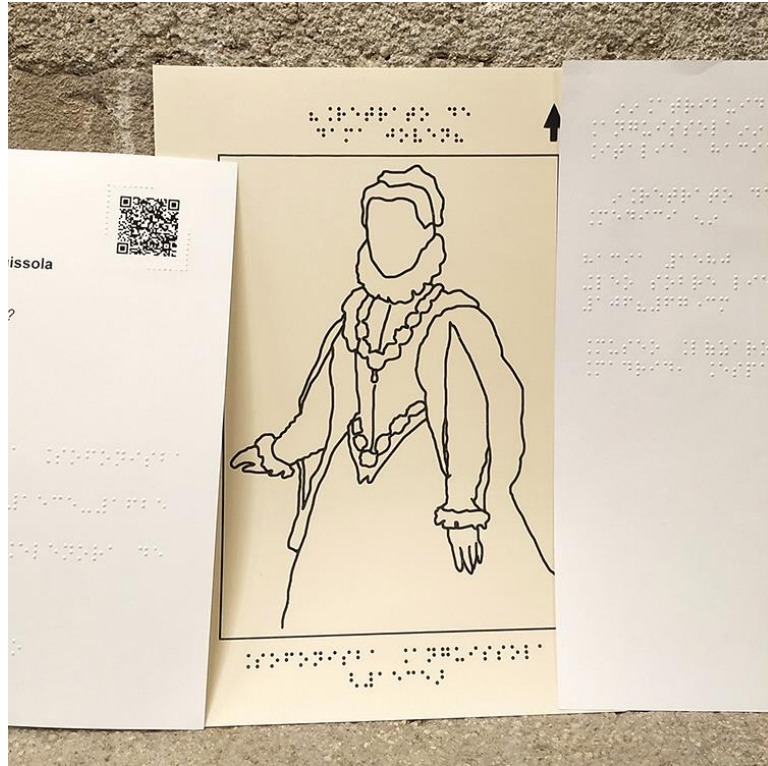


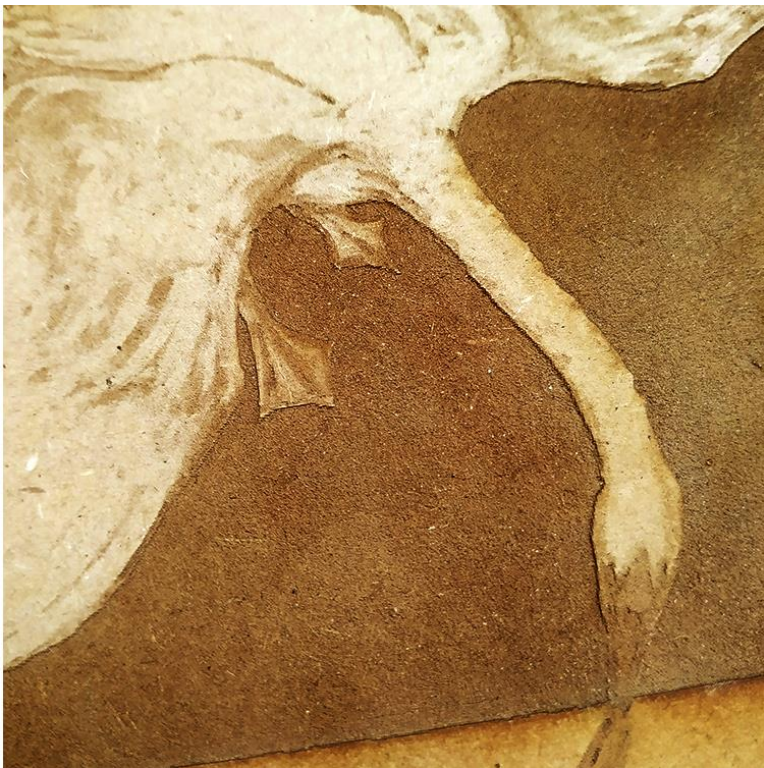


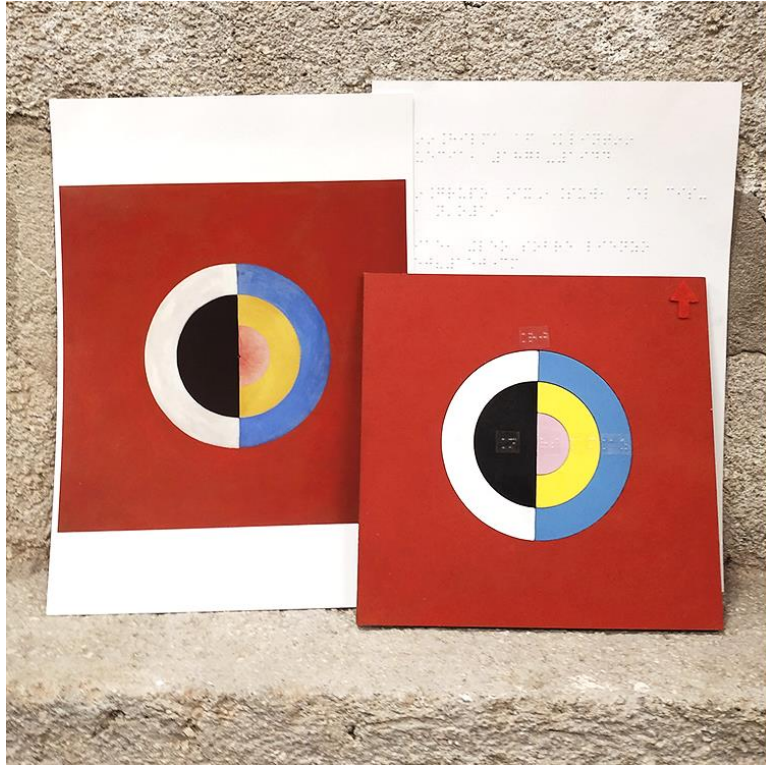




OUR APPROACH TO PAINTING

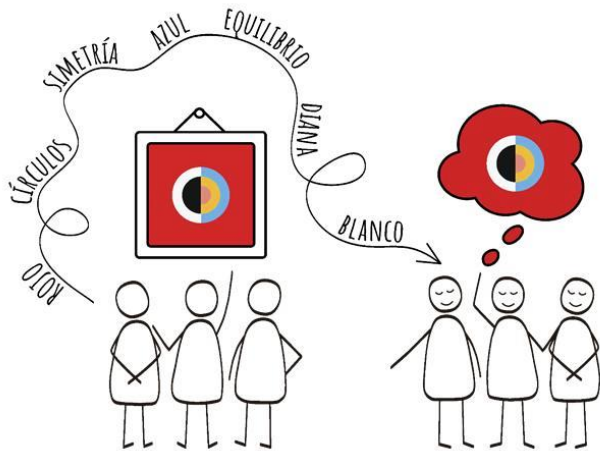








[INSERTAR DESCRIPCIÓN]



1. Preferably small groups of 6 to 8 people.
2. At least one BPS participant in each group.
3. Multi-sensory Approach to make the description more vivid.
4. Record the audio and transcribe it.
5. Arrange all the information in a logical order.
6. Write the description.
7. Share it!

miméticas/lab

www.mimeticaslab.org

MUCHAS GRACIAS

